



- 1. Pale Yellow-Green (Sul-R:1063)
- 2. Pink Tint (Sul-R:1068)
- 3. Med. Ecru (Sul-R:1127)
- 4. Pastel Orchid (Sul-R:1111)
- 5. Powder Blue Tint (Sul-R:1151)
- 6. Primrose (Sul-R:1066)
- 7. Orchid (Sul-R:1080)

Gfe-Arb-2-1.vp3
76.80x130.50 mm; 22,716 stitches
7 thread changes; 7 colors




- 1. Pale Yellow-Green (Sul-R:1063)
- 2. Ecru (Sul-R:1082)
- 3. Pink Tint (Sul-R:1068)
- 4. Silver (Sul-R:1085)
- 5. Med. Ecru (Sul-R:1127)
- 6. Pastel Orchid (Sul-R:1111)
- 7. Powder Blue Tint (Sul-R:1151)
- 8. Primrose (Sul-R:1066)

Gfe-Arb-2-10.vp3
74.80x138.20 mm; 16,194 stitches
8 thread changes; 8 colors




- 1. Pale Yellow-Green (Sul-R:1063)
- 2. Pink Tint (Sul-R:1068)
- 3. Med. Ecru (Sul-R:1127)
- 4. Pastel Orchid (Sul-R:1111)
- 5. Powder Blue Tint (Sul-R:1151)
- 6. Primrose (Sul-R:1066)
- 7. Orchid (Sul-R:1080)

Gfe-Arb-2-11.vp3
108.70x176.10 mm; 25,879 stitches
7 thread changes; 7 colors



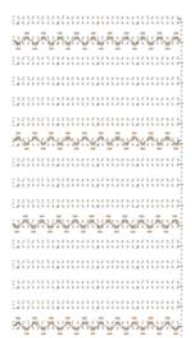
- 1. Pale Yellow-Green (Sul-R:1063)
- 2. Pink Tint (Sul-R:1068)
- 3. Med. Ecru (Sul-R:1127)
- 4. Pastel Orchid (Sul-R:1111)
- 5. Powder Blue Tint (Sul-R:1151)
- 6. Primrose (Sul-R:1066)
- 7. Orchid (Sul-R:1080)

Gfe-Arb-2-12.vp3
109.90x158.70 mm; 29,779 stitches
7 thread changes; 7 colors




- 1. Off White (Sul-R:1071)
- 2. Pale Yellow-Green (Sul-R:1063)
- 3. Med. Ecru (Sul-R:1127)
- 4. Pink Tint (Sul-R:1068)
- 5. Pastel Orchid (Sul-R:1111)
- 6. Powder Blue Tint (Sul-R:1151)
- 7. Primrose (Sul-R:1066)
- 8. Orchid (Sul-R:1080)

Gfe-Arb-2-13.vp3
100.60x176.30 mm; 27,258 stitches
8 thread changes; 8 colors




- 1. Off White (Sul-R:1071)
- 2. Ecru (Sul-R:1082)

Gfe-Arb-2-14.vp3
74.50x147.00 mm; 4,122 stitches
2 thread changes; 2 colors



- 1. Off White (Sul-R:1071)
- 2. Ecru (Sul-R:1082)

Gfe-Arb-2-15.vp3
71.00x149.60 mm; 4,406 stitches
2 thread changes; 2 colors



- 1. Off White (Sul-R:1071)
- 2. Ecru (Sul-R:1082)
- 3. Pale Yellow-Green (Sul-R:1063)
- 4. Pink Tint (Sul-R:1068)
- 5. Med. Ecru (Sul-R:1127)
- 6. Pastel Orchid (Sul-R:1111)
- 7. Primrose (Sul-R:1066)

Gfe-Arb-2-16.vp3
70.90x149.50 mm; 11,022 stitches
7 thread changes; 7 colors



- 1. Off White (Sul-R:1071)
- 2. Ecru (Sul-R:1082)
- 3. Pale Yellow-Green (Sul-R:1063)
- 4. Pink Tint (Sul-R:1068)
- 5. Med. Ecru (Sul-R:1127)
- 6. Pastel Orchid (Sul-R:1111)
- 7. Primrose (Sul-R:1066)

Gfe-Arb-2-17.vp3

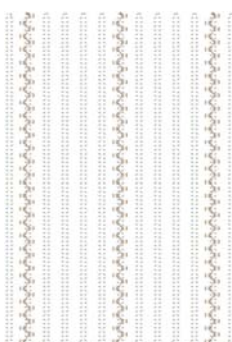
70.90x149.60 mm; 9,049 stitches
7 thread changes; 7 colors



- 1. Off White (Sul-R:1071)
- 2. Ecru (Sul-R:1082)
- 3. Pale Yellow-Green (Sul-R:1063)
- 4. Pink Tint (Sul-R:1068)
- 5. Med. Ecru (Sul-R:1127)
- 6. Pastel Orchid (Sul-R:1111)
- 7. Powder Blue Tint (Sul-R:1151)
- 8. Primrose (Sul-R:1066)

Gfe-Arb-2-18.vp3

74.60x147.00 mm; 12,668 stitches
8 thread changes; 8 colors



- 1. Off White (Sul-R:1071)
- 2. Ecru (Sul-R:1082)
- 3. Ecru (Sul-R:1082)

Gfe-Arb-2-19.vp3

119.40x175.80 mm; 6,866 stitches
3 thread changes; 2 colors



- 1. Pale Yellow-Green (Sul-R:1063)
- 2. Pink Tint (Sul-R:1068)
- 3. Med. Ecru (Sul-R:1127)
- 4. Pastel Orchid (Sul-R:1111)
- 5. Powder Blue Tint (Sul-R:1151)
- 6. Primrose (Sul-R:1066)

Gfe-Arb-2-2.vp3

23.00x118.10 mm; 7,568 stitches
6 thread changes; 6 colors



- 1. Off White (Sul-R:1071)
- 2. Ecru (Sul-R:1082)

Gfe-Arb-2-20.vp3

129.20x166.50 mm; 7,211 stitches
2 thread changes; 2 colors



- 1. Off White (Sul-R:1071)
- 2. Ecru (Sul-R:1082)
- 3. Pale Yellow-Green (Sul-R:1063)
- 4. Pink Tint (Sul-R:1068)
- 5. Med. Ecru (Sul-R:1127)
- 6. Pastel Orchid (Sul-R:1111)
- 7. Powder Blue Tint (Sul-R:1151)
- 8. Primrose (Sul-R:1066)

Gfe-Arb-2-21.vp3

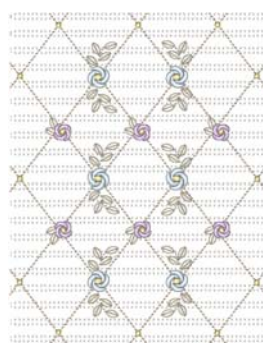
119.40x175.80 mm; 26,006 stitches
8 thread changes; 8 colors



- 1. Off White (Sul-R:1071)
- 2. Ecru (Sul-R:1082)
- 3. Pale Yellow-Green (Sul-R:1063)
- 4. Pink Tint (Sul-R:1068)
- 5. Med. Ecru (Sul-R:1127)
- 6. Pastel Orchid (Sul-R:1111)
- 7. Powder Blue Tint (Sul-R:1151)
- 8. Primrose (Sul-R:1066)
- 9. Orchid (Sul-R:1080)

Gfe-Arb-2-22.vp3


119.40x176.00 mm; 35,427 stitches
9 thread changes; 9 colors



- 1. Off White (Sul-R:1071)
- 2. Ecru (Sul-R:1082)
- 3. Pale Yellow-Green (Sul-R:1063)
- 4. Pastel Orchid (Sul-R:1111)
- 5. Powder Blue Tint (Sul-R:1151)
- 6. Primrose (Sul-R:1066)


Gfe-Arb-2-23.vp3

129.50x168.50 mm; 20,218 stitches
6 thread changes; 6 colors




- 1. Off White (Sul-R:1071)
- 2. Ecrú (Sul-R:1082)
- 3. Pale Yellow-Green (Sul-R:1063)
- 4. Pink Tint (Sul-R:1068)
- 5. Med. Ecrú (Sul-R:1127)
- 6. Pastel Orchid (Sul-R:1111)
- 7. Powder Blue Tint (Sul-R:1151)
- 8. Primrose (Sul-R:1066)

Gfe-Arb-2-24.vp3
129.70x168.70 mm; 22,689 stitches
8 thread changes; 8 colors




- 1. Pale Yellow-Green (Sul-R:1063)
- 2. Med. Ecrú (Sul-R:1127)
- 3. Pink Tint (Sul-R:1068)
- 4. Pastel Orchid (Sul-R:1111)
- 5. Powder Blue Tint (Sul-R:1151)
- 6. Med. Ecrú (Sul-R:1127)
- 7. Primrose (Sul-R:1066)

Gfe-Arb-2-3.vp3
41.00x125.50 mm; 12,359 stitches
7 thread changes; 6 colors



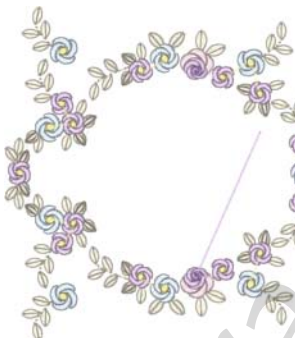
- 1. Pale Yellow-Green (Sul-R:1063)
- 2. Pink Tint (Sul-R:1068)
- 3. Pastel Orchid (Sul-R:1111)
- 4. Powder Blue Tint (Sul-R:1151)
- 5. Med. Ecrú (Sul-R:1127)
- 6. Primrose (Sul-R:1066)
- 7. Orchid (Sul-R:1080)

Gfe-Arb-2-4.vp3
82.50x143.20 mm; 18,834 stitches
7 thread changes; 7 colors




- 1. Pale Yellow-Green (Sul-R:1063)
- 2. Pink Tint (Sul-R:1068)
- 3. Med. Ecrú (Sul-R:1127)
- 4. Pastel Orchid (Sul-R:1111)
- 5. Powder Blue Tint (Sul-R:1151)
- 6. Primrose (Sul-R:1066)
- 7. Orchid (Sul-R:1080)

Gfe-Arb-2-5.vp3
75.90x135.10 mm; 16,325 stitches
7 thread changes; 7 colors




- 1. Pale Yellow-Green (Sul-R:1063)
- 2. Pink Tint (Sul-R:1068)
- 3. Med. Ecrú (Sul-R:1127)
- 4. Pastel Orchid (Sul-R:1111)
- 5. Powder Blue Tint (Sul-R:1151)
- 6. Primrose (Sul-R:1066)
- 7. Orchid (Sul-R:1080)

Gfe-Arb-2-6.vp3
121.70x129.10 mm; 24,442 stitches
7 thread changes; 7 colors




- 1. Med. Ecrú (Sul-R:1127)
- 2. Pale Yellow-Green (Sul-R:1063)
- 3. Ecrú (Sul-R:1082)
- 4. Silver (Sul-R:1085)
- 5. Pink Tint (Sul-R:1068)
- 6. Med. Ecrú (Sul-R:1127)
- 7. Pastel Orchid (Sul-R:1111)
- 8. Powder Blue Tint (Sul-R:1151)
- 9. Orchid (Sul-R:1080)
- 10. Primrose (Sul-R:1066)

Gfe-Arb-2-7.vp3
74.00x149.00 mm; 37,945 stitches
10 thread changes; 9 colors



- 1. Pale Yellow-Green (Sul-R:1063)
- 2. Pink Tint (Sul-R:1068)
- 3. Med. Ecrú (Sul-R:1127)
- 4. Pastel Orchid (Sul-R:1111)
- 5. Powder Blue Tint (Sul-R:1151)
- 6. Primrose (Sul-R:1066)
- 7. Orchid (Sul-R:1080)

Gfe-Arb-2-8.vp3
106.30x131.90 mm; 24,378 stitches
7 thread changes; 7 colors



- 1. Pale Yellow-Green (Sul-R:1063)
- 2. Pink Tint (Sul-R:1068)
- 3. Med. Ecrú (Sul-R:1127)
- 4. Pastel Orchid (Sul-R:1111)
- 5. Powder Blue Tint (Sul-R:1151)
- 6. Primrose (Sul-R:1066)
- 7. Orchid (Sul-R:1080)

Gfe-Arb-2-9.vp3
111.50x163.30 mm; 29,614 stitches
7 thread changes; 7 colors