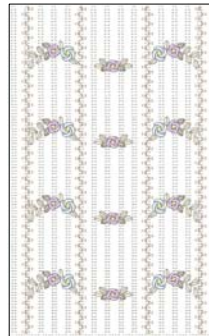




- 1. Ecu (Sul-R:1082)
- 2. Pastel Orchid (Sul-R:1111)
- 3. Pale Yellow-Green (Sul-R:1063)
- 4. Pink Tint (Sul-R:1068)
- 5. Med. Ecu (Sul-R:1127)
- 6. Pastel Orchid (Sul-R:1111)
- 7. Powder Blue Tint (Sul-R:1151)
- 8. Primrose (Sul-R:1066)
- 9. Orchid (Sul-R:1080)

Gfe-Arb-3-1.vp3

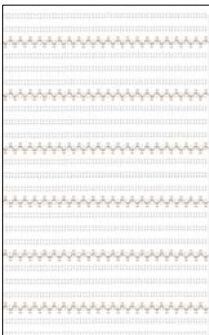
4.74x8.46 inches; 50,597 stitches
9 thread changes; 8 colors



- 1. Off White (Sul-R:1071)
- 2. Ecu (Sul-R:1082)
- 3. Pale Yellow-Green (Sul-R:1063)
- 4. Pink Tint (Sul-R:1068)
- 5. Med. Ecu (Sul-R:1127)
- 6. Pastel Orchid (Sul-R:1111)
- 7. Powder Blue Tint (Sul-R:1151)
- 8. Primrose (Sul-R:1066)

Gfe-Arb-3-10.vp3

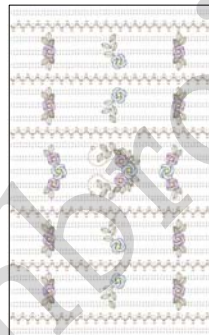
5.78x9.33 inches; 42,236 stitches
8 thread changes; 8 colors



- 1. Off White (Sul-R:1071)
- 2. Ecu (Sul-R:1082)

Gfe-Arb-3-11.vp3

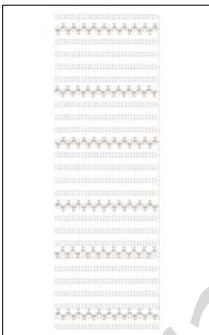
5.81x9.18 inches; 10,961 stitches
2 thread changes; 2 colors



- 1. Off White (Sul-R:1071)
- 2. Ecu (Sul-R:1082)
- 3. Pale Yellow-Green (Sul-R:1063)
- 4. Pink Tint (Sul-R:1068)
- 5. Med. Ecu (Sul-R:1127)
- 6. Pastel Orchid (Sul-R:1111)
- 7. Powder Blue Tint (Sul-R:1151)
- 8. Primrose (Sul-R:1066)

Gfe-Arb-3-12.vp3

5.83x9.18 inches; 33,722 stitches
8 thread changes; 8 colors



- 1. Off White (Sul-R:1071)
- 2. Ecu (Sul-R:1082)

Gfe-Arb-3-13.vp3

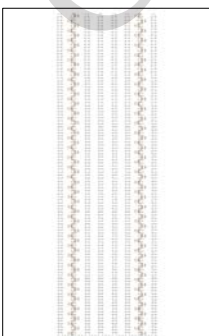
2.93x8.93 inches; 5,598 stitches
2 thread changes; 2 colors



- 1. Off White (Sul-R:1071)
- 2. Ecu (Sul-R:1082)
- 3. Pale Yellow-Green (Sul-R:1063)
- 4. Pink Tint (Sul-R:1068)
- 5. Med. Ecu (Sul-R:1127)
- 6. Pastel Orchid (Sul-R:1111)
- 7. Powder Blue Tint (Sul-R:1151)
- 8. Primrose (Sul-R:1066)

Gfe-Arb-3-14.vp3

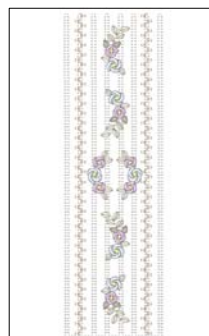
2.92x8.93 inches; 16,826 stitches
8 thread changes; 8 colors



- 1. Off White (Sul-R:1071)
- 2. Ecu (Sul-R:1082)

Gfe-Arb-3-15.vp3

2.78x9.16 inches; 9,649 stitches
2 thread changes; 2 colors



- 1. Off White (Sul-R:1071)
- 2. Ecu (Sul-R:1082)
- 3. Pale Yellow-Green (Sul-R:1063)
- 4. Pink Tint (Sul-R:1068)
- 5. Med. Ecu (Sul-R:1127)
- 6. Pastel Orchid (Sul-R:1111)
- 7. Powder Blue Tint (Sul-R:1151)
- 8. Primrose (Sul-R:1066)

Gfe-Arb-3-16.vp3

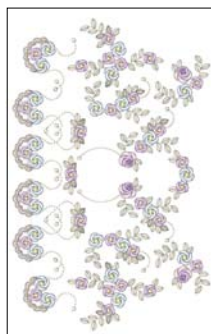
2.78x9.16 inches; 22,187 stitches
8 thread changes; 8 colors



- 1. Pale Yellow-Green (Sul-R:1063)
- 2. Pink Tint (Sul-R:1068)
- 3. Med. Ecrú (Sul-R:1127)
- 4. Pastel Orchid (Sul-R:1111)
- 5. Powder Blue Tint (Sul-R:1151)
- 6. Primrose (Sul-R:1066)
- 7. Orchid (Sul-R:1080)

Gfe-Arb-3-2.vp3

3.79x8.10 inches; 36,351 stitches
7 thread changes; 7 colors



- 1. Pale Yellow-Green (Sul-R:1063)
- 2. Ecrú (Sul-R:1082)
- 3. Silver (Sul-R:1085)
- 4. Pink Tint (Sul-R:1068)
- 5. Med. Ecrú (Sul-R:1127)
- 6. Pastel Orchid (Sul-R:1111)
- 7. Powder Blue Tint (Sul-R:1151)
- 8. Primrose (Sul-R:1066)
- 9. Orchid (Sul-R:1080)

Gfe-Arb-3-3.vp3

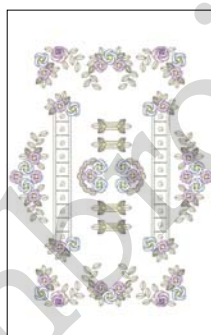
5.58x8.84 inches; 58,091 stitches
9 thread changes; 9 colors



- 1. Pale Yellow-Green (Sul-R:1063)
- 2. Pink Tint (Sul-R:1068)
- 3. Med. Ecrú (Sul-R:1127)
- 4. Pastel Orchid (Sul-R:1111)
- 5. Powder Blue Tint (Sul-R:1151)
- 6. Primrose (Sul-R:1066)
- 7. Orchid (Sul-R:1080)

Gfe-Arb-3-4.vp3

5.25x8.69 inches; 51,707 stitches
7 thread changes; 7 colors



- 1. Ecrú (Sul-R:1082)
- 2. Silver (Sul-R:1085)
- 3. Off White (Sul-R:1071)
- 4. Pink Tint (Sul-R:1068)
- 5. Pale Yellow-Green (Sul-R:1063)
- 6. Med. Ecrú (Sul-R:1127)
- 7. Pastel Orchid (Sul-R:1111)
- 8. Powder Blue Tint (Sul-R:1151)
- 9. Primrose (Sul-R:1066)
- 10. Orchid (Sul-R:1080)

Gfe-Arb-3-5.vp3

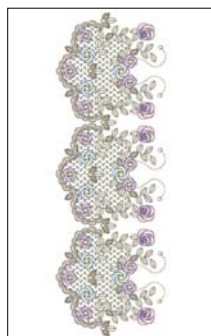
5.76x7.39 inches; 55,198 stitches
10 thread changes; 10 colors



- 1. Ecrú (Sul-R:1082)
- 2. Silver (Sul-R:1085)
- 3. Pale Yellow-Green (Sul-R:1063)
- 4. Pink Tint (Sul-R:1068)
- 5. Med. Ecrú (Sul-R:1127)
- 6. Pastel Orchid (Sul-R:1111)
- 7. Powder Blue Tint (Sul-R:1151)
- 8. Primrose (Sul-R:1066)
- 9. Orchid (Sul-R:1080)

Gfe-Arb-3-6.vp3

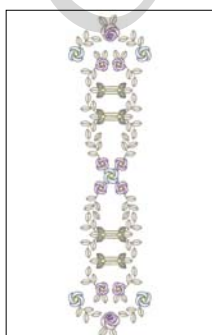
5.80x9.23 inches; 55,898 stitches
9 thread changes; 9 colors



- 1. Med. Ecrú (Sul-R:1127)
- 2. Pale Yellow-Green (Sul-R:1063)
- 3. Ecrú (Sul-R:1082)
- 4. Silver (Sul-R:1085)
- 5. Pink Tint (Sul-R:1068)
- 6. Med. Ecrú (Sul-R:1127)
- 7. Pastel Orchid (Sul-R:1111)
- 8. Powder Blue Tint (Sul-R:1151)
- 9. Primrose (Sul-R:1066)
- 10. Orchid (Sul-R:1080)

Gfe-Arb-3-7.vp3

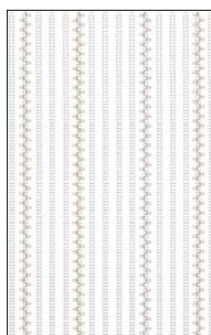
2.91x8.61 inches; 54,984 stitches
10 thread changes; 9 colors



- 1. Pale Yellow-Green (Sul-R:1063)
- 2. Med. Ecrú (Sul-R:1127)
- 3. Pink Tint (Sul-R:1068)
- 4. Pastel Orchid (Sul-R:1111)
- 5. Powder Blue Tint (Sul-R:1151)
- 6. Med. Ecrú (Sul-R:1127)
- 7. Primrose (Sul-R:1066)
- 8. Orchid (Sul-R:1080)

Gfe-Arb-3-8.vp3

2.19x8.61 inches; 23,501 stitches
8 thread changes; 7 colors



- 1. Off White (Sul-R:1071)
- 2. Ecrú (Sul-R:1082)

Gfe-Arb-3-9.vp3

5.78x9.32 inches; 19,817 stitches
2 thread changes; 2 colors